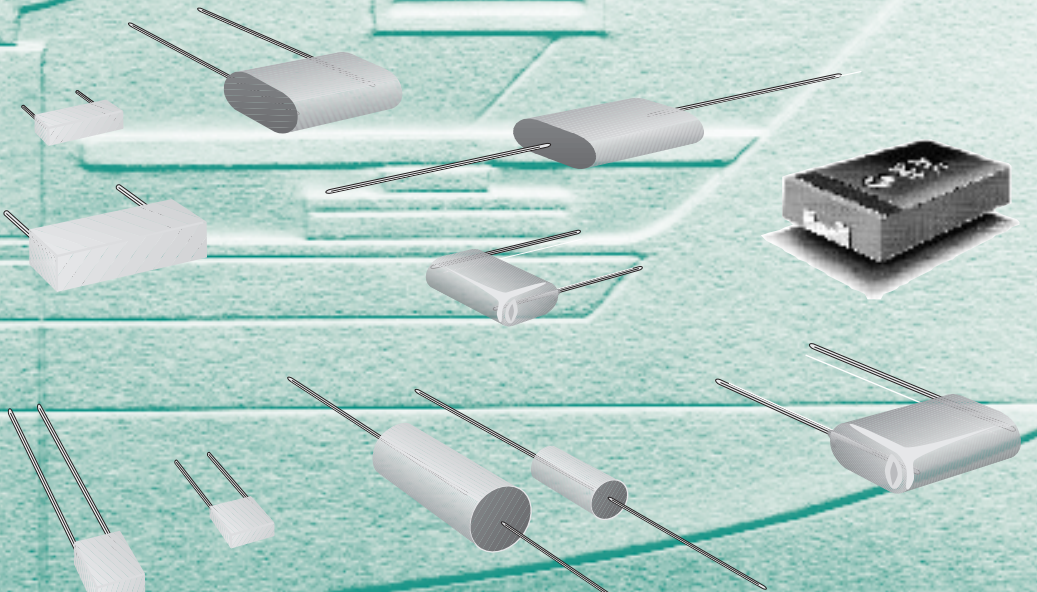
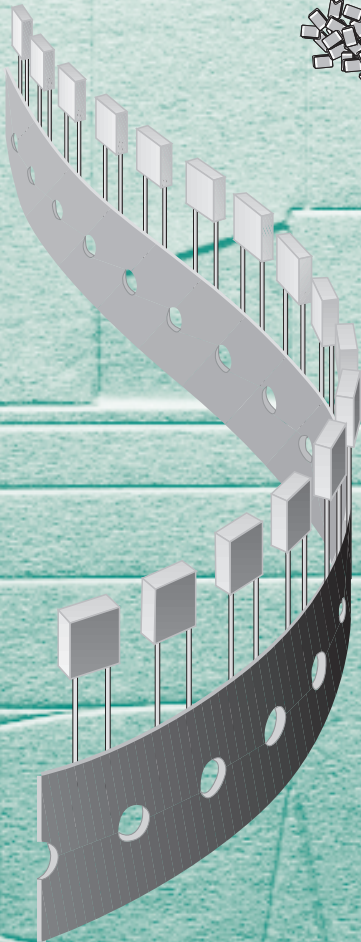
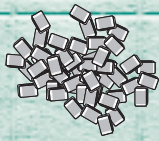
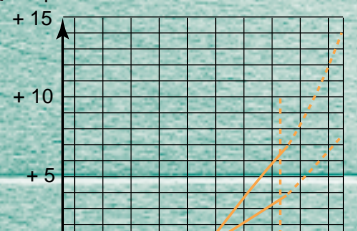


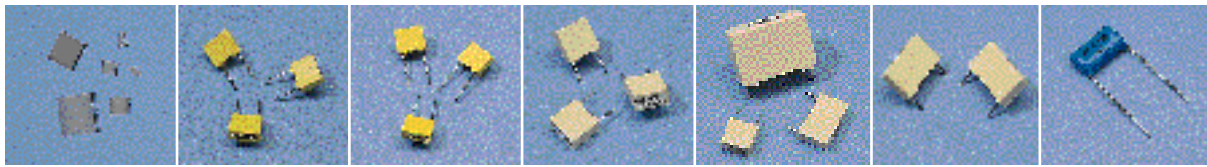
FILM AND TANTALUM CAPACITORS SELECTION GUIDE



Capacitance % Δ



Metallized polyester film capacitors



DESCRIPTION	SMD	Box 5 mm Pitch	Box 5 mm Pitch	Box 7.5 mm to 27.5 mm Pitch	Box 7.5 mm to 27.5 mm Pitch	Box 7.5 mm to 27.5 mm Pitch	Dipped 7.5 mm to 27.5 mm Pitch	
LCC Reference	CF	BF	BH	BO	BT/BC	BK	DK	
UTE/NFC - CECC EIA - CNET Reference		CPM-N	CPM-N	CPM 50	CPM 85	CPM 85		
Application	Chip	General Use	High Temperature	High Temperature	General Use			
Climatic category	55 / 100 / 56	55 / 100 / 56	55 / 125 / 56	55 / 125 / 56	55 / 100 / 56	55 / 100 / 56	40 / 085 / 21	
Capacitance Tolerance %	5 - 10	5 - 10	5 - 10	5 - 10 - 20	5 - 10 - 20	10 - 20	10 - 20	
Voltage Range	63 V dc 100 V dc 250 V dc	63 V dc 100 V dc 250 V dc 400 V dc	63 V dc 100 V dc 250 V dc 400 V dc	40 V dc 63 V dc 160 V dc 250 V dc 400 V dc	40 V dc 63 V dc 160 V dc 250 V dc 400 V dc	63 V dc 100 V dc 160 V dc 250 V dc 400 V dc 630 V dc	100V dc 250 V dc 400 V dc 630 V dc	100 V dc 250 V dc 400 V dc 630 V dc
Capacitance Value	1 nF							
	1.5							
	2.2							
	3.3							
	4.7							
	6.8							
	10 nF							
	15							
	22							
	33							
	47							
	68							
	100 nF							
	150							
	220							
	330							
470								
680								
1 μF								
1.5								
2.2								
3.3								
4.7								
6.8								
10 μF	NEW							
15								
22								
33								
47								

1812
2220
2824
4540
5045
5460
5
7.5
10
15
22.5
27.5

Case size

Pitch

Pitch

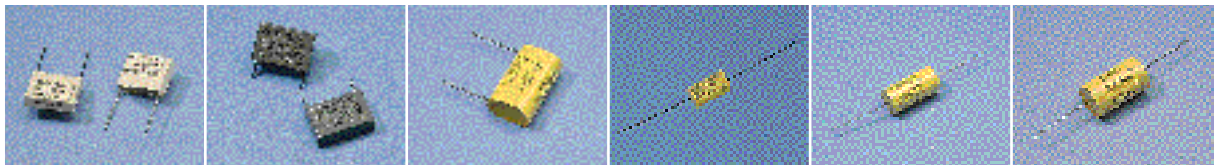
Pitch

Pitch*

Pitch*

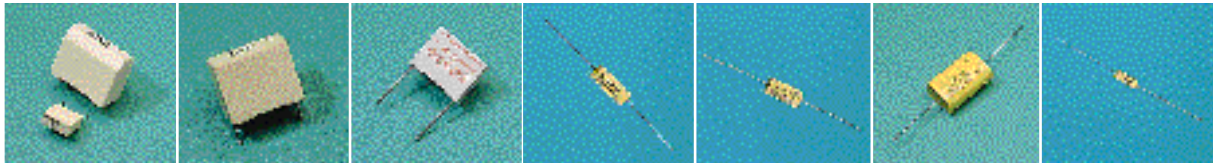
Pitch

Metallized polyester film capacitors



DESCRIPTION	Box 10 to 27.5 mm Pitch	Box 15 to 27.5 mm Pitch	Wrapped Flat radial 7.5 to 27.5 mm Pitch	Wrapped Flat axial 10 to 31 mm Long	Wrapped Cylindrical axial 10 to 31 mm Long	Wrapped Cylindrical axial 22,36 mm Long
LCC Reference	BX	DX	S4	S8	S9	ST
UTE/NFC - CECC EIA - CNET Reference			CPM 13	CPM 8	CPM 72	
Application	Interference Suppression X2-CLASS	Interference Suppression X2-CLASS**	High Temperature		General Use	High Voltage
Climatic category	40 / 085 / 21	40 / 100 / 21	55 / 125 / 21	55 / 125 / 21	55 / 100 / 21	40 / 085 / 21
Capacitance Tolerance %	10 - 20	10 - 20	5 - 10 - 20	5 - 10 - 20	5 - 10	5 - 10 - 20
Voltage Range	250 V ac	275 V ac	63V dc 160V dc 250V dc 400V dc	63V dc 160V dc 250V dc 400V dc	100V dc 250V dc 400V dc 630V dc	630V dc 1000V dc 1600V dc 2500V dc 5000V dc 6300V dc 10000V dc
Capacitance Value	100 pF 150 220 330 470 680					
	1 nF 1.5 2.2 3.3 4.7 6.8					
	10 nF 15 22 33 47 68					
	100 nF 150 220 330 470 680					
	1 μF 1.5 2.2 3.3 4.7 6.8					
	10 μF 15 22 33 47					
	7.5 10 13 14 15 18 22 22.5 27 27.5 31 36					
		NEW				
	Pitch*	Pitch*	Pitch	Pitch	Size	Size
			Pitch	Pitch	Size	Size
						Size*

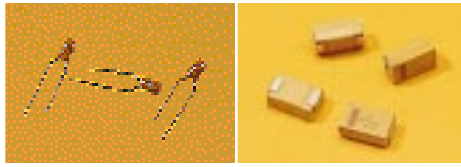
Polypropylene film capacitors



DESCRIPTION	Box 7.5 to 27.5 mm Pitch	Box 15 to 27.5 mm Pitch	Box 10 and 15 mm Pitch	Wrapped Cylindrical axial 18 mm Long	Wrapped Cylindrical axial 18 to 45 mm Long	Wrapped Flat axial 10 to 31 mm Long	Wrapped Cylindrical axial 10 to 31 mm Long
LCC Reference	BB	BP	BY	S1	S2	SA	SC
UTE/NFC - CECC EIA - CNET Reference	PPM-6			PP.2		PPM-8	PPM-2
Application	High Current	High Current and Voltage	Interference Suppression Y-CLASS	Narrow Tolerance	High Current and Voltage	High Current	High Current
Climatic category	55 / 085 / 56	55 / 085 / 56	40 / 085 / 21	55 / 085 / 56	55 / 085 / 56	55 / 085 / 56	55 / 085 / 56
Capacitance Tolerance %	5 - 10	2,5 - 5 - 10	10 - 20	1 - 2 - 5	5 - 10	5 - 10	1 - 2 - 5 - 10
Voltage Range	160 V dc 250 V dc 400 V dc 630 V dc	630 V dc 1000 V dc 1600 V dc 2000 V dc	250 V ac	63 V dc 160 V dc 250 V dc 400 V dc	630 V dc 1000 V dc 1600 V dc 2000 V dc	160V dc 250 V dc 400 V dc 630 V dc	160 V dc 250 V dc 400 V dc 630 V dc
Capacitance Value	100 pF 150 220 330 470 680	1 nF 1.5 2.2 3.3 4.7 6.8	10 nF 15 22 33 47 68	100 nF 150 220 330 470 680	1 μF 1.5 2.2 3.3 4.7 6.8	10 μF 15 22 33 47	
		Pitch*	Pitch*	Size	Size*	Size*	Size

- 7.5
- 10
- 13
- 15
- 18
- 22.5
- 25
- 27
- 27.5
- 31
- 35
- 45

Tantalum capacitors



DESCRIPTION	Dipped								SMD							
LCC Reference	FB								FT							
UTE/NFC - CECC EIA - CNET Reference																
Climatic category	55 / 125 / 56								55 / 125 / 56							
Capacitance Tolerance %	10 - 20								10 - 20							
Voltage Range	6.3 V dc	10 V dc	16 V dc	20 V dc	25 V dc	35 V dc	50 V dc	6.3 V dc	10 V dc	16 V dc	20 V dc	25 V dc	35 V dc	50 V dc		
Capacitance Value	10 nF															
	15															
	22															
	33															
	47															
	68															
	100 nF															
	150															
	220															
	330															
	470															
	680															
	1 μF															
	1.5															
	2.2															
	3.3															
	4.7															
	6.8															
	10 μF															
	15															
	22															
	33															
	47															
	68															
	100 μF															
	150															
	220															
	330															
	470															
	680															

A

B

C

D

E

2.5 or 5

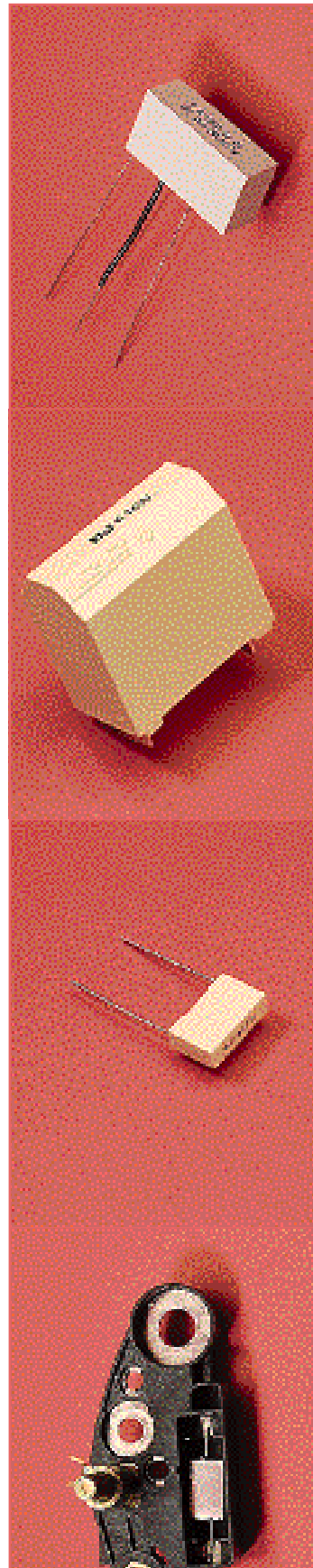
Pitch

Case size*

Specific capacitors

Professional and industrial applications.

Any type of specific requirement relative to capacitance value, product design and environmental conditions can be studied upon request.



Metallized polyester film capacitor with serial resistance.

R-C NETWORK
2.2 μF / 20 k 160 V

Application :
Noise supressor
on telecom line.

Boxed metallized polyester capacitor with specific leads.

22 μF 160 V

Application :
Automotive
Diesel fuel injection system.

Boxed metallized polyester capacitors.

1.5 μF 100 V
High temperature
- 40°C + 165°C (derating)

Application :
Automotive
Interference suppressor
for car alternator.

Welding and encapsulation
of metallized polyester film
capacitor in specific module.

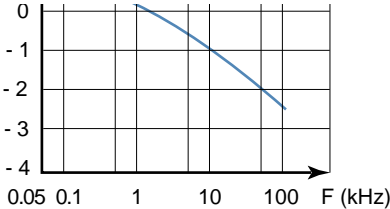
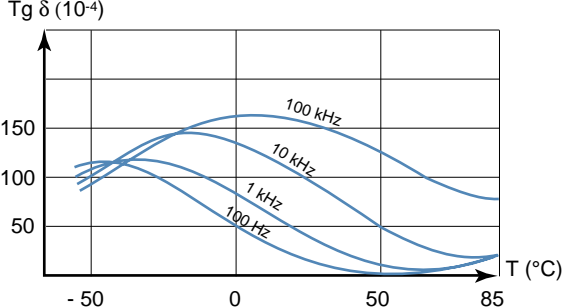
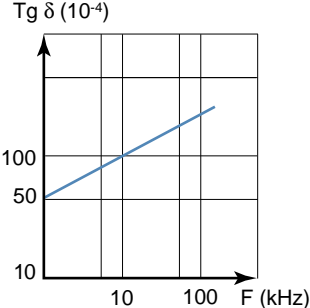
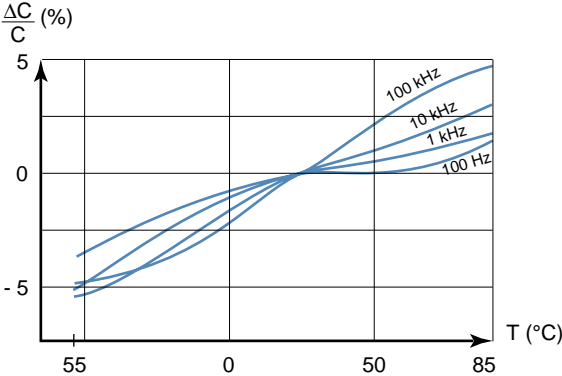
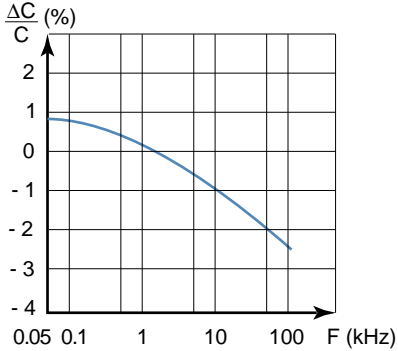
2.2 μF 160 V
High temperature
- 40°C + 150°C (derating)

Application :
Automotive
Interference suppressor

* Largest case size may be available for a given capacitance value : check in our catalogue.

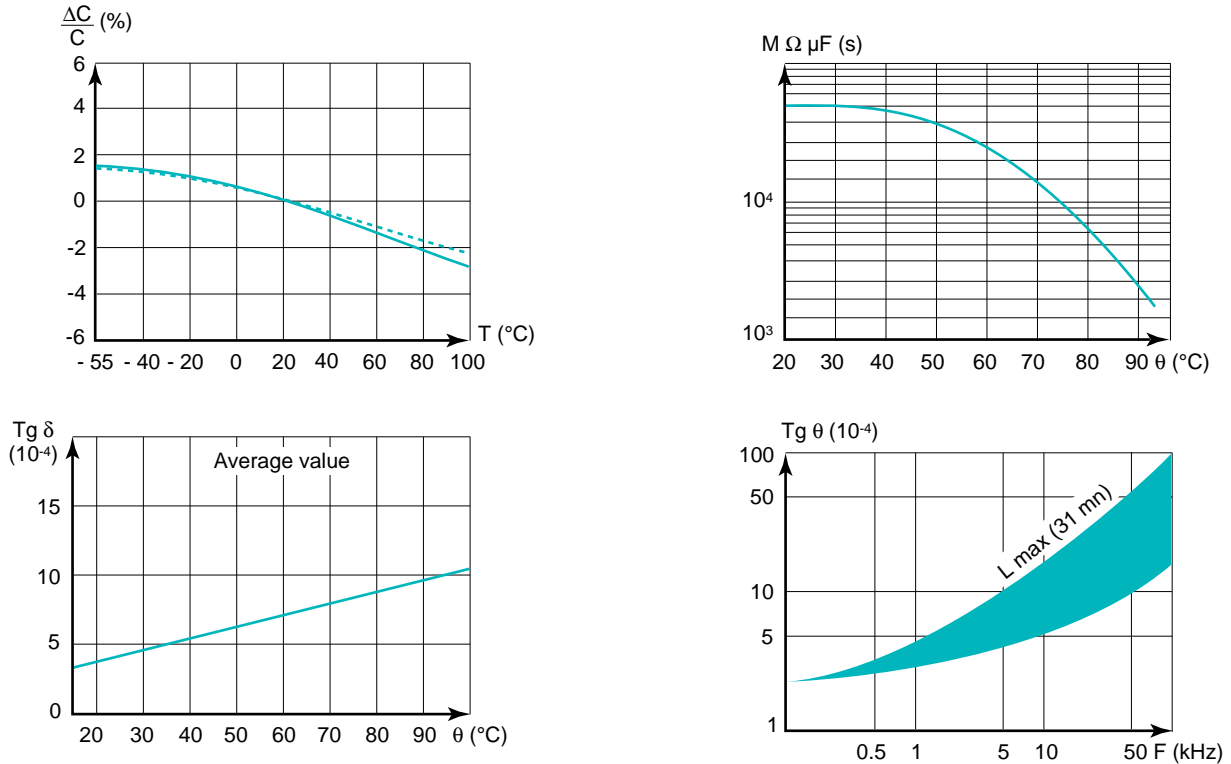
Metallized polyester film capacitors

Typical curves



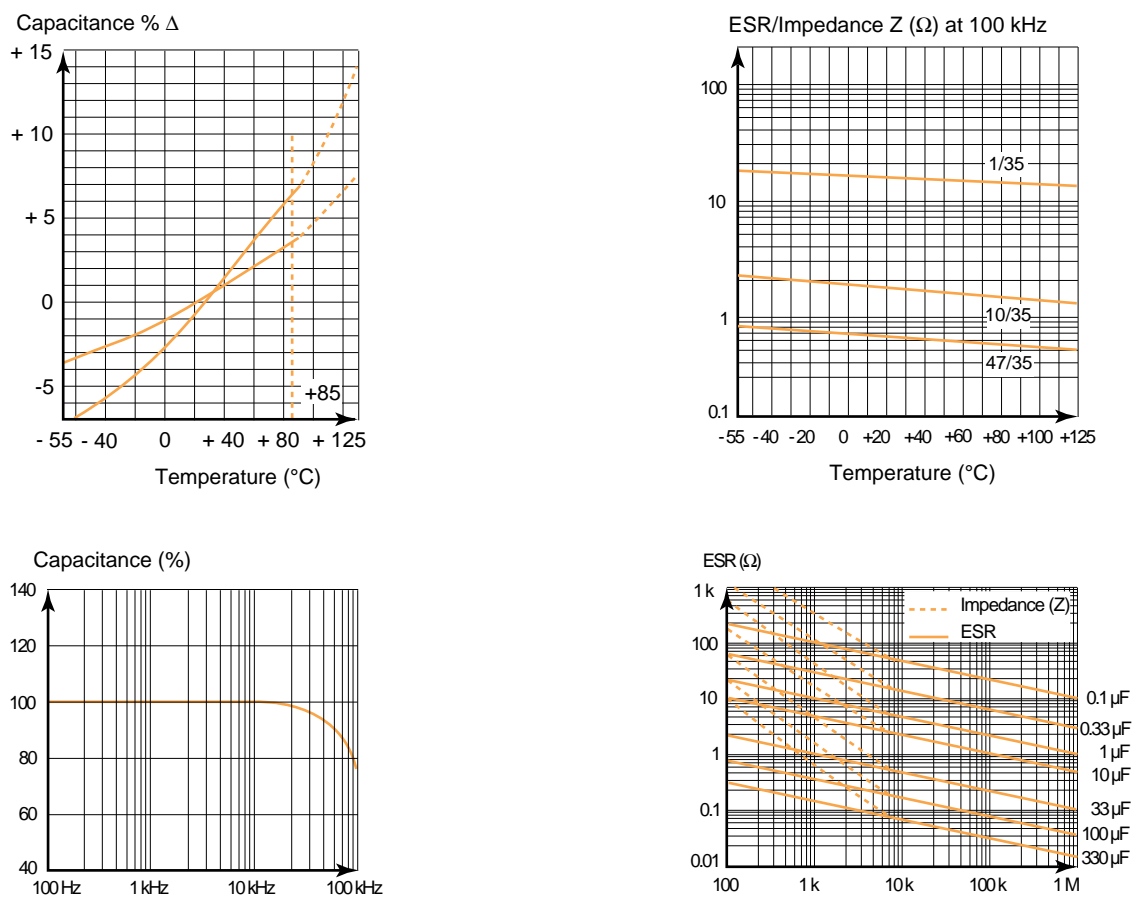
Polypropylene film capacitors

Typical curves



Tantalum capacitors

Typical curves



WORLDWIDE SALES OFFICES

BENELUX

THOMSON SA - NV
Département Composants passifs
Avenue Louise 363 - Boîte 10
B-1050 BRUXELLES
Tel. : (32) 2 627 03 10
Tlx : 23113 THBXL B
Fax : (32) 2 627 03 33

BRAZIL

THOMSON COMPONENTES DO BRASIL Ltda
Avenida Roque Petroni Jr. 1464
BROOKLIN
04707-000 SAO PAULO - S.P.
Tel. : (55) 11 536 47 22
Tlx : 1157386 TCSF BR
Fax : (55) 11 240 33 03

FRANCE

LCC
Services Commerciaux France
29, avenue Carnot
91349 MASSY Cedex
Tel. : (33-1) 69 93 40 30
Fax : (33-1) 69 93 40 92

GERMANY

THOMSON BAUELEMENTE GmbH
Perchtinger Strasse 3
D-81379 MUNCHEN 70
Tel. : (49) 89 78 790
Tlx : 522 916 CSFD
Fax : (49) 89 78 79 145

HONG KONG

THOMSON COMPONENTS ASIA Ltd
81F Rays Industrial Building
71 Hung to road
Kwun Tong
KOWLOON - HONG KONG
Tel. : (852) 389 00 22
Tlx : 67437 TCA HX
Fax : (852) 797 80 81

INDIA

THOMSON COMPONENTS ASIA Ltd
India Representative Office
S 322 Manjpal Centre
47 Dickenson Road
BANGALORE-42 INDIA
Tel. : (91 80) 5588001/5588181/5588101 ext. 3404
Tlx : 0845 3122
Fax : (91 80) 5586456

ITALY

THOMSON COMPONENTI - SpA
Viale Fulvio Testi, 117
20092 CINISELLO BALSAMO (MILANO)
Tel. : (39) 2 660 15 510
Tlx : 330 301
Fax : (39) 2 660 15 677

OTHER COUNTRIES

LCC
International Sales Department
29, avenue Carnot
91349 MASSY Cedex
Tel. : (33-1) 69 93 40 90
Fax : (33-1) 69 93 40 92

SINGAPORE

THOMSON-CSF S.E. ASIA Pte Ltd
171 Kallang Way # 03-08
Kolam Ayer Industrial Park
SINGAPORE 1334
Tel. : (65) 741 90 88
Tlx : RS 35898 TCSEA
Fax : (65) 741 92 88

SPAIN AND PORTUGAL

THOMSON TUBOS Y COMPONENTES SA
C/Principe de Vergara, 204 - 1° B
28002 MADRID
Tel. : (34) 1 564 02 72
Tlx : 46033 TCCE-E
Fax : (34) 1 564 19 40

TAIWAN

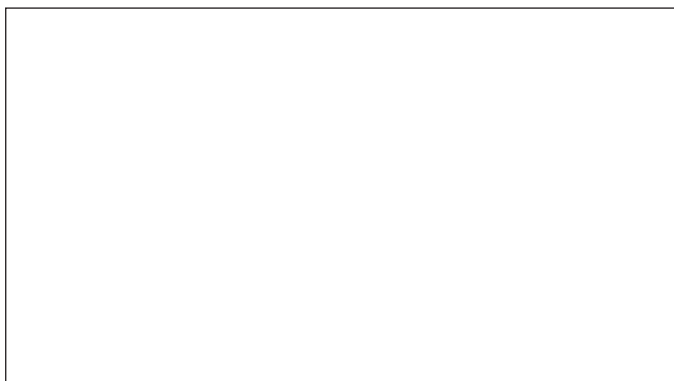
THOMSON ELECTRONIC PARTS
12 F, # 149-16, Sec. 2
Keelung Road. Taipei 110
TAIWAN R.O.C.
Tel. : (8862) 378 6792
Tlx : 26904 THOMSON T
Fax : (8862) 736 2142

U.K. AND IRELAND

THOMSON ELECTRONIC COMPONENTS Ltd
Unit 4 Cartel Business Centre
Stroudley Road
Basingstoke, Hants RG 24 OUG
Tel. : (44) 256 84 33 23
Tlx : 858 121
Fax : (44) 256 23 172

USA

THOMSON PASSIVE COMPONENTS CORPORATION
9350, Eton Avenue
CHATSWORTH
CA-91311 Chatsworth
Tel. : (1) 818 407 49 50
Fax : (1) 818 407 49 49



*"Specifications mentioned in this publication
are subject to change without notice."*