

ALUMINUM ELECTROLYTIC CAPACITORS



PX Series

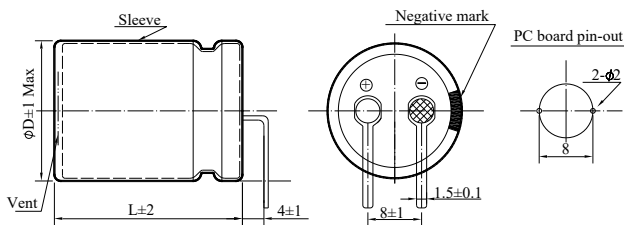
- Load life 105°C 2,000 hours horizontal mounting
- Suitable for flat equipment design



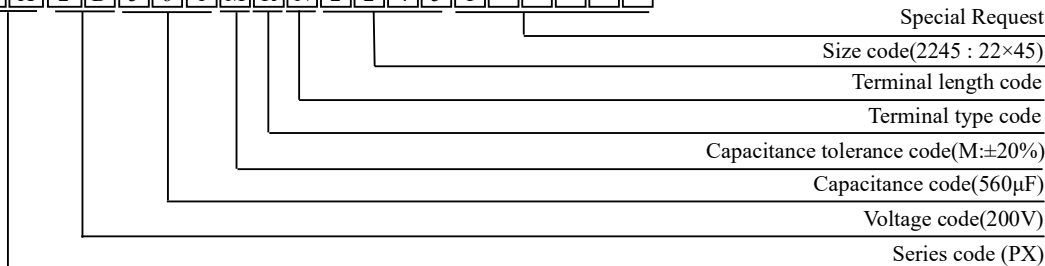
◆ SPECIFICATIONS

Item	Performance Characteristics												
Category Temperature Range	-25 ~ +105°C												
Working Voltage Range	160 ~ 450Vdc												
Capacitance Range	68 ~ 1,500 μF												
Capacitance Tolerance	±20% (at 25°C and 120Hz)												
Dissipation Factor (tanδ) (at 25°C, 120Hz)	<table border="1"> <tr> <td>Rated Voltage (V)</td> <td>160</td> <td>200</td> <td>250</td> <td>400</td> <td>450</td> </tr> <tr> <td>tanδ(Max)</td> <td>0.15</td> <td>0.15</td> <td>0.15</td> <td>0.15</td> <td>0.15</td> </tr> </table>	Rated Voltage (V)	160	200	250	400	450	tanδ(Max)	0.15	0.15	0.15	0.15	0.15
	Rated Voltage (V)	160	200	250	400	450							
tanδ(Max)	0.15	0.15	0.15	0.15	0.15								
Leakage Current	I=0.02CV or 3000μA, whichever is smaller I : Leakage current (μA) C : Rated capacitance (μF) V : Rated voltage (V) Impress the rated voltage for 5 minutes												
Low Temperature Characteristics Impedance Ratio(MAX)	<table border="1"> <tr> <td>Rated voltage (V)</td> <td>160~250</td> <td>400</td> <td>450</td> </tr> <tr> <td>Z(-25°C)/Z(+20°C)</td> <td>4</td> <td>4</td> <td>8</td> </tr> </table> (at 120Hz)	Rated voltage (V)	160~250	400	450	Z(-25°C)/Z(+20°C)	4	4	8				
Rated voltage (V)	160~250	400	450										
Z(-25°C)/Z(+20°C)	4	4	8										
Endurance	The following specifications shall be satisfied when the capacitors are restored to 25°C after subjected to DC voltage with the rated ripple current is applied for 2,000 hours at 105°C. <table border="1"> <tr> <td>Capacitance change</td> <td>≦ ±20% of the initial value</td> </tr> <tr> <td>Dissipation factor(tanδ)</td> <td>≦ 200% of the specified value</td> </tr> <tr> <td>Leakage current</td> <td>≦ Not more than the specified value</td> </tr> </table>	Capacitance change	≦ ±20% of the initial value	Dissipation factor(tanδ)	≦ 200% of the specified value	Leakage current	≦ Not more than the specified value						
Capacitance change	≦ ±20% of the initial value												
Dissipation factor(tanδ)	≦ 200% of the specified value												
Leakage current	≦ Not more than the specified value												
Shelf Life	The following requirements shall be satisfied when the capacitor are restored to 25°C after exposing them for 1,000 hours at 105°C without voltage applied. <table border="1"> <tr> <td>Capacitance change</td> <td>≦ ±20% of the initial value</td> </tr> <tr> <td>Dissipation factor(tanδ)</td> <td>≦ 200% of the specified value</td> </tr> <tr> <td>Leakage current</td> <td>≦ Not more than the specified value</td> </tr> </table>	Capacitance change	≦ ±20% of the initial value	Dissipation factor(tanδ)	≦ 200% of the specified value	Leakage current	≦ Not more than the specified value						
Capacitance change	≦ ±20% of the initial value												
Dissipation factor(tanδ)	≦ 200% of the specified value												
Leakage current	≦ Not more than the specified value												
Others	Conforms to JIS-C-5101-4 (1998)												

◆ DIMENSIONS (mm)



◆ PART NUMBER SYSTEM (Example : 200V 560μF)



ALUMINUM ELECTROLYTIC CAPACITORS



PX Series

STANDARD RATINGS

WV (Vdc)	Cap (μF)	Case Size (mm) ΦD×L	Rated Ripple current (mA rms/ 105°C, 120Hz)	Part Number
160 (2C)	330	20×30	1020	PX2C331MRN2030Y
	390	20×35	1150	PX2C391MRN2035Y
	390	22×30	1170	PX2C391MRN2230Y
	470	20×40	1250	PX2C471MRN2040Y
	470	22×30	1280	PX2C471MRN2230Y
	560	20×45	1420	PX2C561MRN2045Y
	560	22×35	1450	PX2C561MRN2235Y
	680	20×50	1600	PX2C681MRN2050Y
	680	22×40	1640	PX2C681MRN2240Y
	680	25.4×35	1700	PX2C681MRN2535YJ
	820	20×55	1810	PX2C821MRN2055Y
	820	22×45	1850	PX2C821MRN2245Y
	820	25.4×40	1920	PX2C821MRN2540YJ
	1000	22×55	2100	PX2C102MRN2255Y
	1000	25.4×45	2170	PX2C102MRN2545YJ
1200	25.4×50	2430	PX2C122MRN2550YJ	
1500	25.4×60	2620	PX2C152MRN2560YJ	
200 (2D)	270	20×30	970	PX2D271MRN2030Y
	330	20×35	1170	PX2D331MRN2035Y
	330	22×30	1200	PX2D331MRN2230Y
	390	20×40	1270	PX2D391MRN2040Y
	390	22×35	1300	PX2D391MRN2235Y
	470	20×45	1410	PX2D471MRN2045Y
	470	22×40	1440	PX2D471MRN2240Y
	560	20×55	1560	PX2D561MRN2055Y
	560	22×45	1600	PX2D561MRN2245Y
	560	25.4×35	1600	PX2D561MRN2535YJ
	680	20×60	1710	PX2D681MRN2060Y
	680	22×50	1750	PX2D681MRN2250Y
	680	25.4×40	1760	PX2D681MRN2540YJ
	820	22×60	2100	PX2D821MRN2260Y
	820	25.4×45	2100	PX2D821MRN2545YJ
1000	25.4×50	2360	PX2D102MRN2550YJ	
250 (2E)	180	20×30	820	PX2E181MRN2030Y
	220	20×35	950	PX2E221MRN2035Y
	220	22×30	970	PX2E221MRN2230Y
	270	20×40	1080	PX2E271MRN2040Y
	270	22×35	1110	PX2E271MRN2235Y
	330	20×45	1230	PX2E331MRN2045Y
	330	22×40	1260	PX2E331MRN2240Y
	390	20×50	1380	PX2E391MRN2050Y
	390	22×45	1410	PX2E391MRN2245Y
	390	25.4×35	1420	PX2E391MRN2535YJ

WV (Vdc)	Cap (μF)	Case Size (mm) ΦD×L	Rated Ripple current (mA rms/ 105°C, 120Hz)	Part Number
250 (2E)	470	20×60	1540	PX2E471MRN2060Y
	470	22×50	1580	PX2E471MRN2250Y
	470	25.4×40	1610	PX2E471MRN2540YJ
	560	22×55	1800	PX2E561MRN2255Y
	560	25.4×45	1800	PX2E561MRN2545YJ
	680	25.4×50	2030	PX2E681MRN2550YJ
	820	25.4×60	2260	PX2E821MRN2560YJ
	400 (2G)	68	20×30	480
82		20×30	540	PX2G820MRN2030Y
100		20×35	600	PX2G101MRN2035Y
100		22×30	620	PX2G101MRN2230Y
120		20×40	710	PX2G121MRN2040Y
120		22×35	730	PX2G121MRN2235Y
150		20×45	830	PX2G151MRN2045Y
150		22×40	850	PX2G151MRN2240Y
150		25.4×35	850	PX2G151MRN2535YJ
180		20×55	930	PX2G181MRN2055Y
180		22×45	950	PX2G181MRN2245Y
180		25.4×35	920	PX2G181MRN2535YJ
220		22×50	1080	PX2G221MRN2250Y
220		25.4×40	1050	PX2G221MRN2540YJ
270		22×60	1200	PX2G271MRN2260Y
270	25.4×50	1290	PX2G271MRN2550YJ	
330	25.4×60	1410	PX2G331MRN2560YJ	
450 (2W)	68	20×25	500	PX2W680MRN2025Y
	68	22×25	520	PX2W680MRN2225Y
	82	20×30	630	PX2W820MRN2030Y
	82	22×30	660	PX2W820MRN2230Y
	100	20×35	650	PX2W101MRN2035Y
	100	22×30	685	PX2W101MRN2230Y
	120	20×40	750	PX2W121MRN2040Y
	120	22×35	790	PX2W121MRN2235Y
	120	25.4×30	800	PX2W121MRN2530YJ
	150	20×45	870	PX2W151MRN2045Y
	150	22×40	895	PX2W151MRN2240Y
	150	25.4×35	900	PX2W151MRN2535YJ
	180	20×50	1015	PX2W181MRN2050Y
	180	22×50	1030	PX2W181MRN2250Y
	180	25.4×40	1050	PX2W181MRN2540YJ
	220	20×60	1150	PX2W221MRN2060Y
	220	22×55	1175	PX2W221MRN2255Y
	220	25.4×45	1190	PX2W221MRN2545YJ
270	25.4×55	1300	PX2W271MRN2555YJ	

RIPPLE CURRENT MULTIPLIERS

Frequency Multipliers

Vdc	Frequency (Hz)				
	50	120	1K	10K	≥50K
160 ~ 250	0.81	1.00	1.32	1.45	1.50
400 ~ 450	0.77	1.00	1.30	1.41	1.43